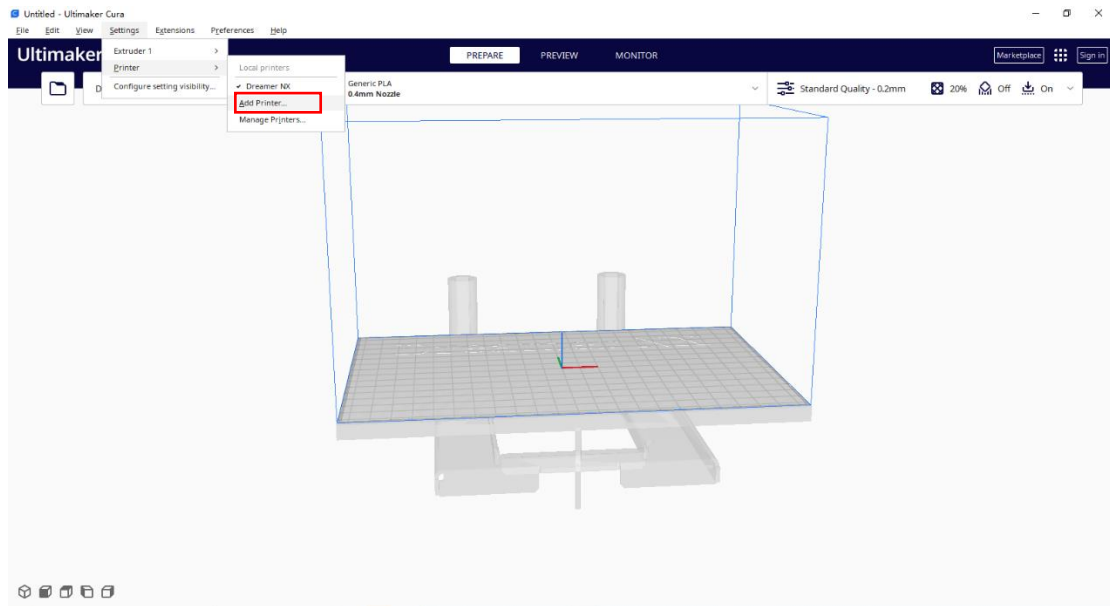


# Cura Setup for Flashforge Finder 3

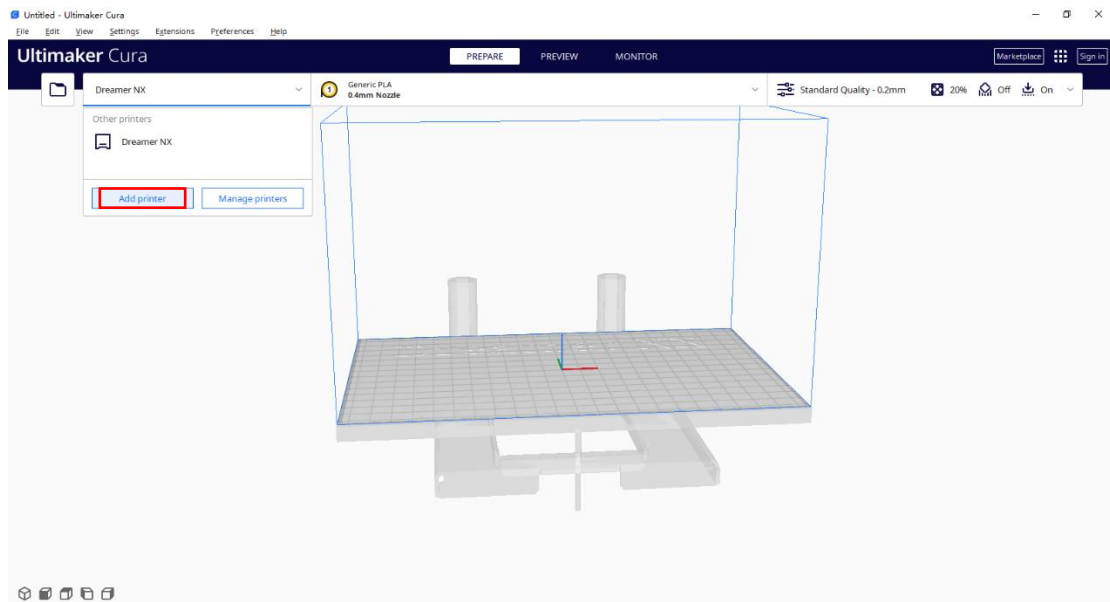
## Step 1: Launch Cura

## Step 2: Add Your 3D Printer

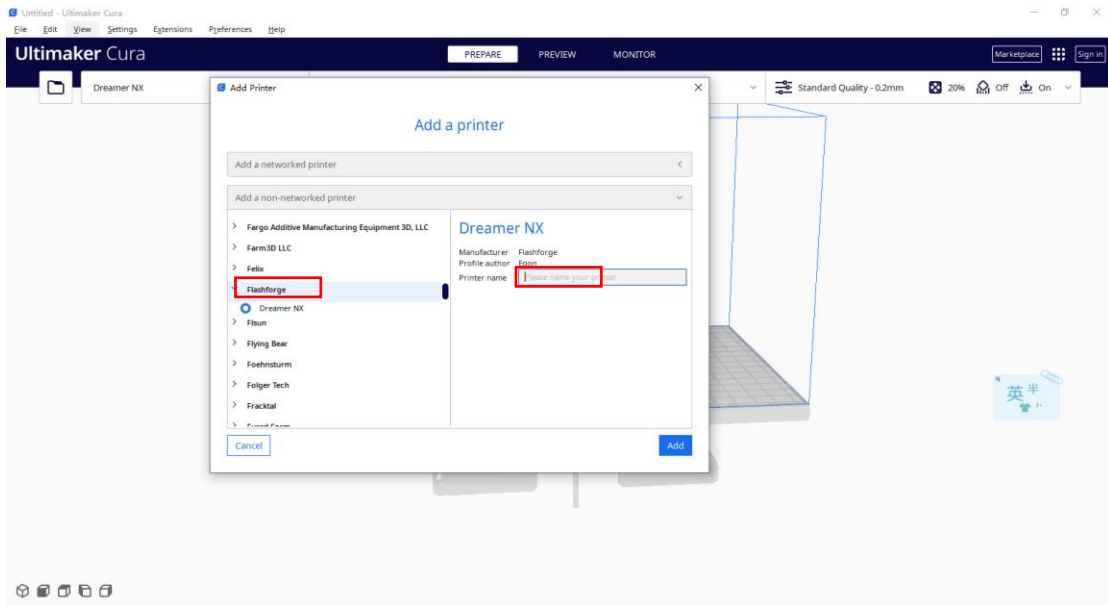
### 2.1 Option 1: Settings -> Printer -> Add Printer



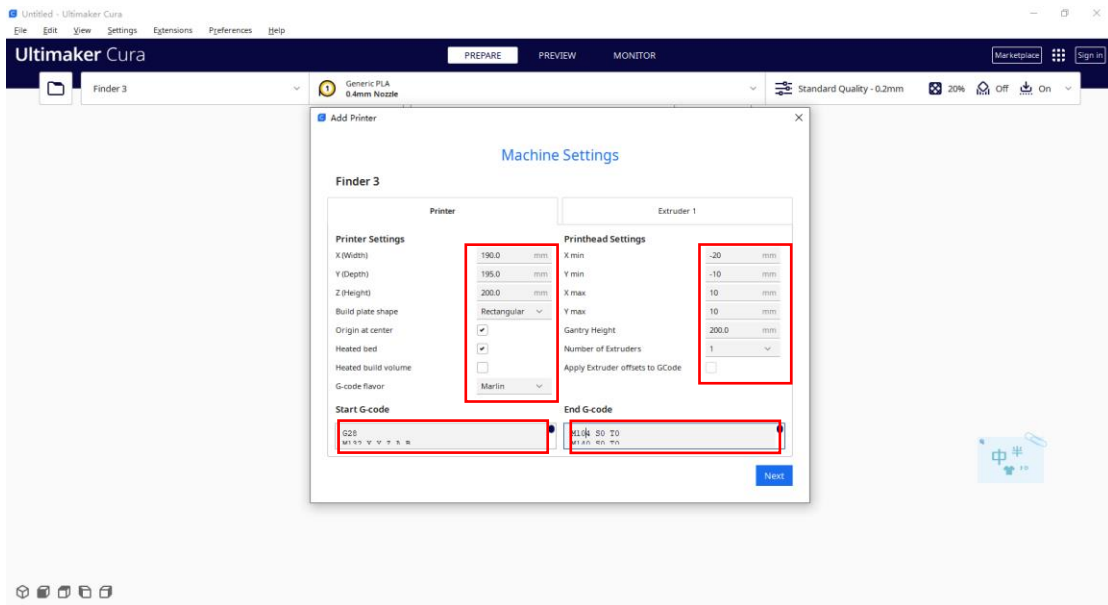
### Option 2: On the main interface, click the Printer section, then click Add printer in the dropdown.



### 2.2 On the pop-up window, please find Flashforge in the left list, then fill in your Printer name on the right. Click Add to proceed.



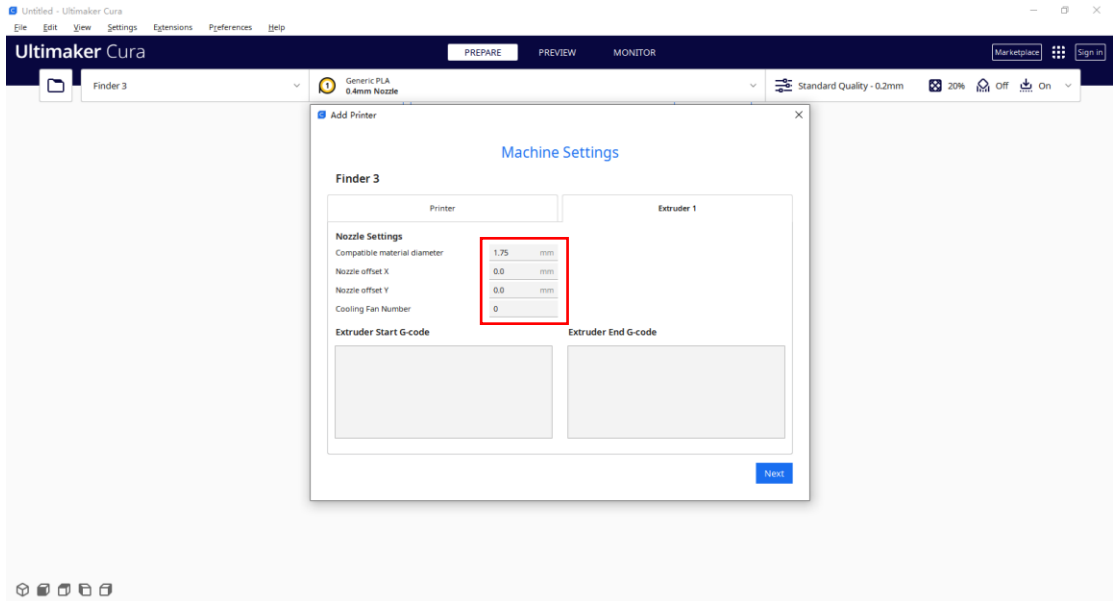
2.3 On the Machine Settings window, kindly fill in the **Printer** spec as suggested in the red. Switch to **Extruder 1** to confirm the extruder setting as suggested in the red. Then click *Next* to proceed.



Printer Setting	Printhead Setting
X (Width) <b>190.0</b>	X min <b>-20</b>
Y (Depth) <b>195.0</b>	Y min <b>-10</b>
Z (Height) <b>200.0</b>	X max <b>10</b>
Build plate shape: <b>Rectangular</b>	Y max <b>10</b>
Original at Center <input checked="" type="checkbox"/>	Gantry Height <b>200.0</b>
Hotend bed <input checked="" type="checkbox"/>	Number of Extruders <b>1</b>
G-code flavor <b>Marlin</b>	

Start G-code:	End G-code:
---------------	-------------

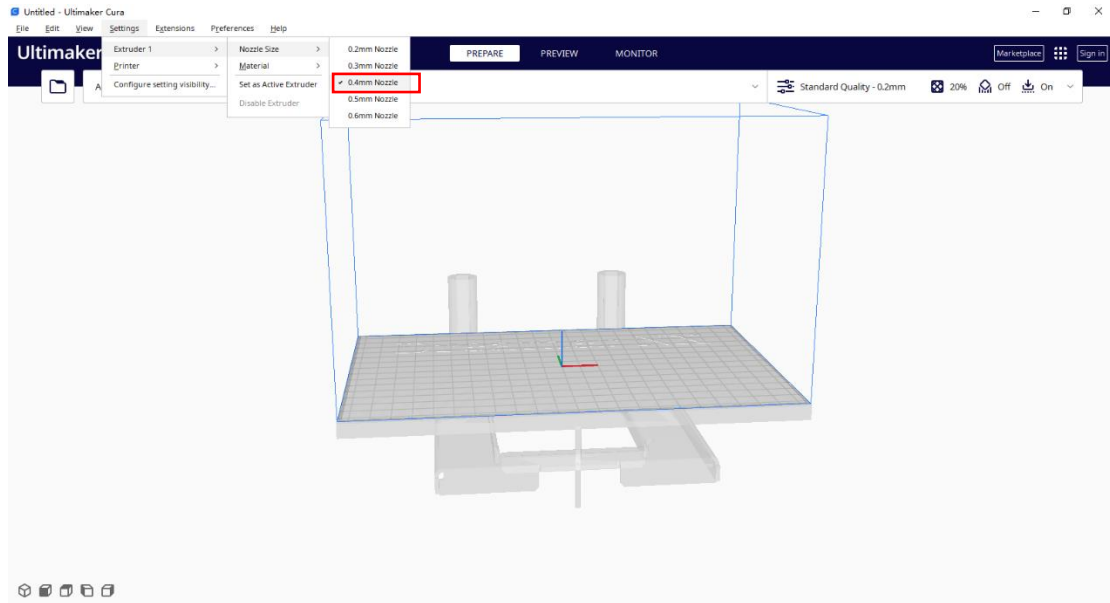
G28 M132 X Y Z A B G1 Z50.000 F420 G161 X Y F3300 M7 T0 M6 T0 M651 S255	M104 S0 T0 M140 S0 T0 G162 Z F1800 G28 X Y M132 X Y A B M652 G91 M18
---	---



<b>Nozzle Settings</b>
Compatible material diameter <b>1.75</b>
Nozzle offset X <b>0.0</b>
Nozzle offset Y <b>0.0</b>
Cooling fan number <b>0</b>

### Step 3: Select Nozzle Size

Once the printer is added, you may go to Settings -> Extruder 1 -> Nozzle Size to select your printer's nozzle size as 0.4mm.



**Step 4: You may now create new project and start slicing**

Hope this helps. If you need any assistance on slicing or printing, Flashforge's dedicated support team is only an email away. Feel free to drop us a line at [support@flashforge.com](mailto:support@flashforge.com).